

# Excess Supply DR Pilot (XSP) Performance Calculation

CPUC Load Shift Working Group  
June 19, 2018



Together, Building  
a Better California



# XSP Performance Measurement

## Performance calculation compares event load to typical usage

- Uses whole premise meter data (no sub-metering)
- Utilizes same methodology as “10-in-10” wholesale baseline (ISO Type 1)
  - ISO Type 1 was the approved methodology for wholesale DR participation
  - Performance = event load minus baseline
- PG&E’s position is that this methodology is valid regardless of directionality of event



## XSP Experience with 10-in-10

**XSP has been successfully using 10-in-10 to calculate load increase performance since 2016.**

- Have not encountered any issues unique to load increase.
- May look at other baseline methodologies approved in ESDER Phase 2.

# Appendix

## 10-in-10 Baseline Calculation



Together, Building  
a Better California



# Identify 10 Similar Non-event Days

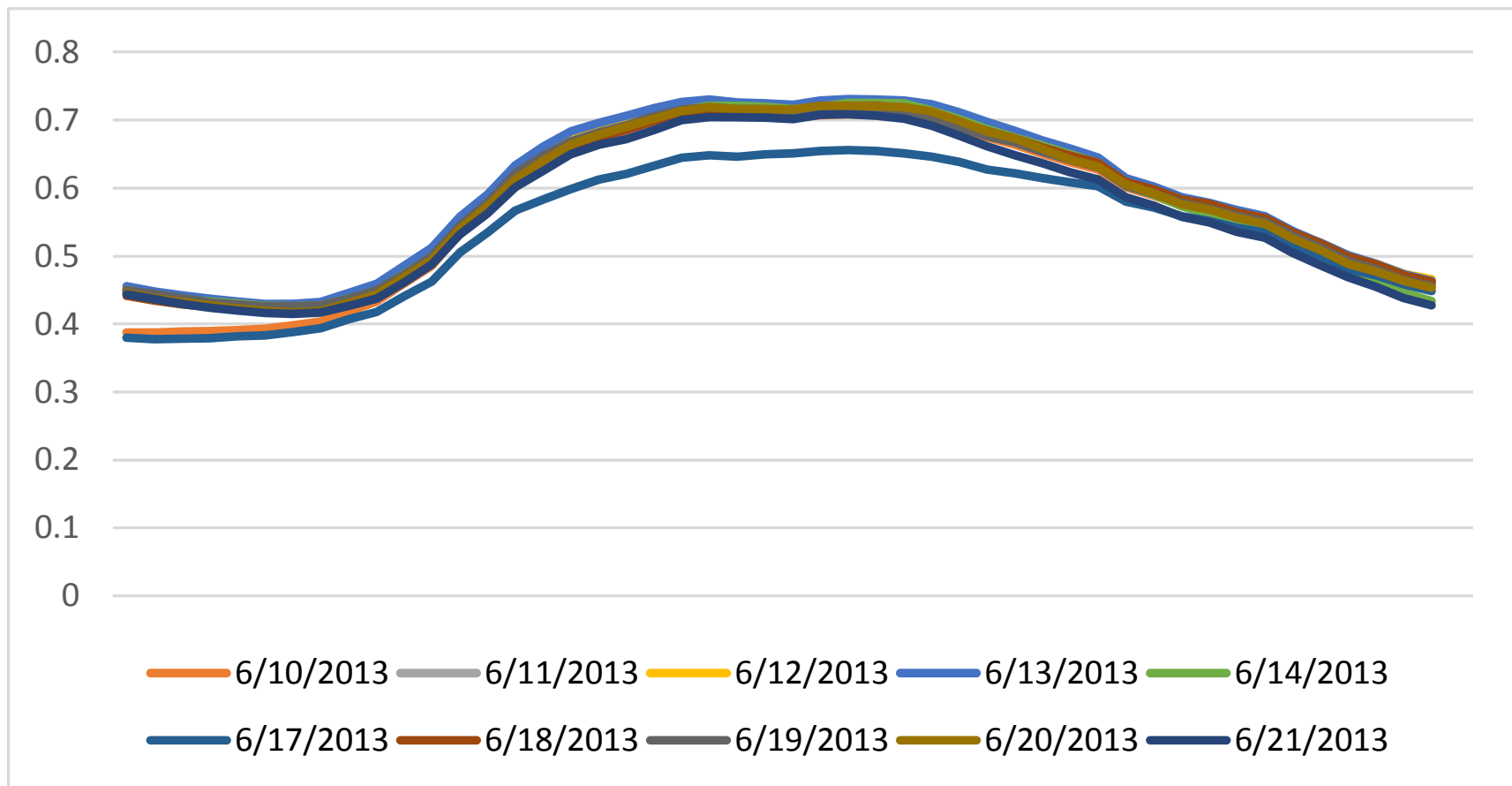


Figure Courtesy of Olivine, Inc..



# Calculate Average Profile

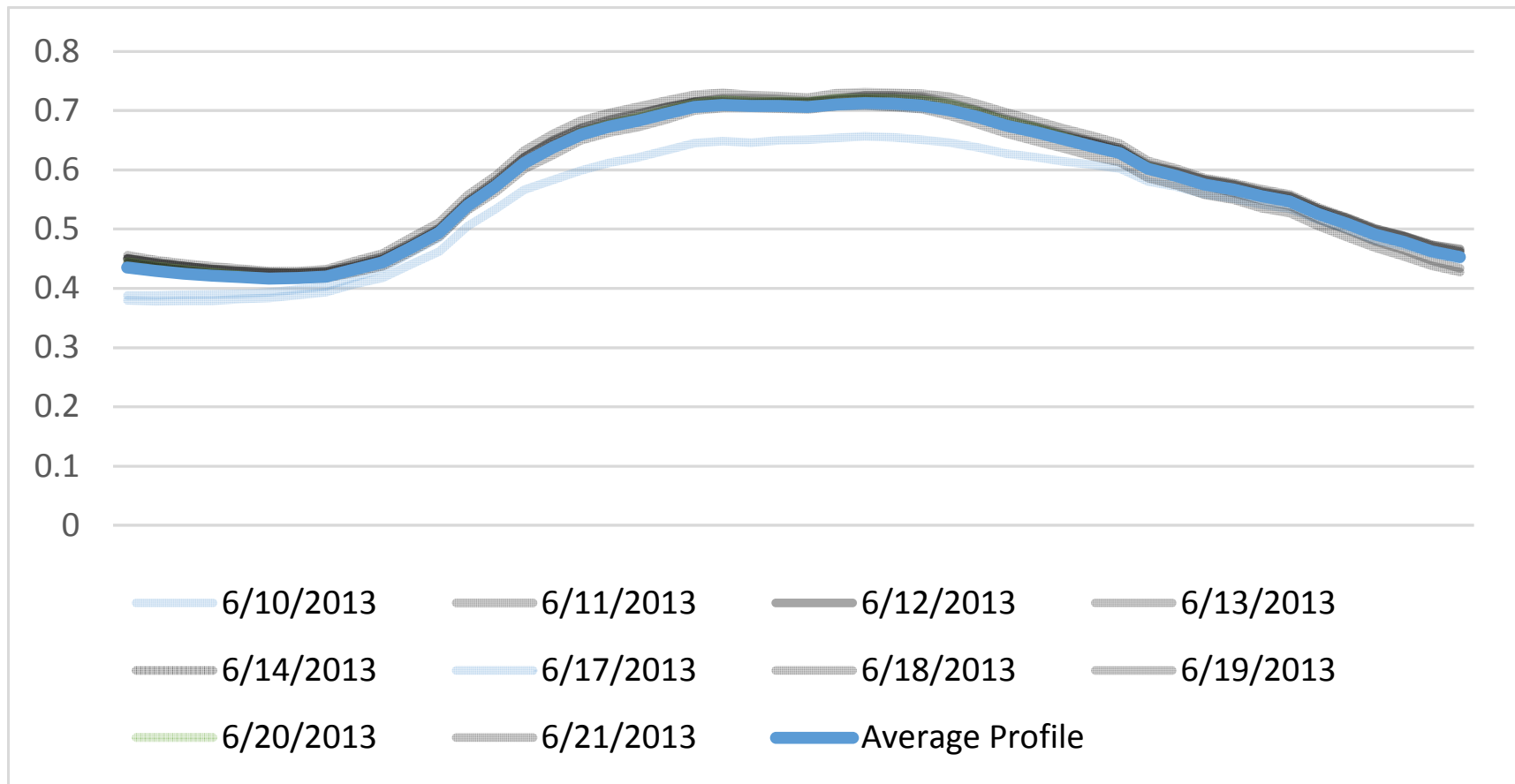


Figure Courtesy of Olivine, Inc..



# Determine Day-of Adjustment

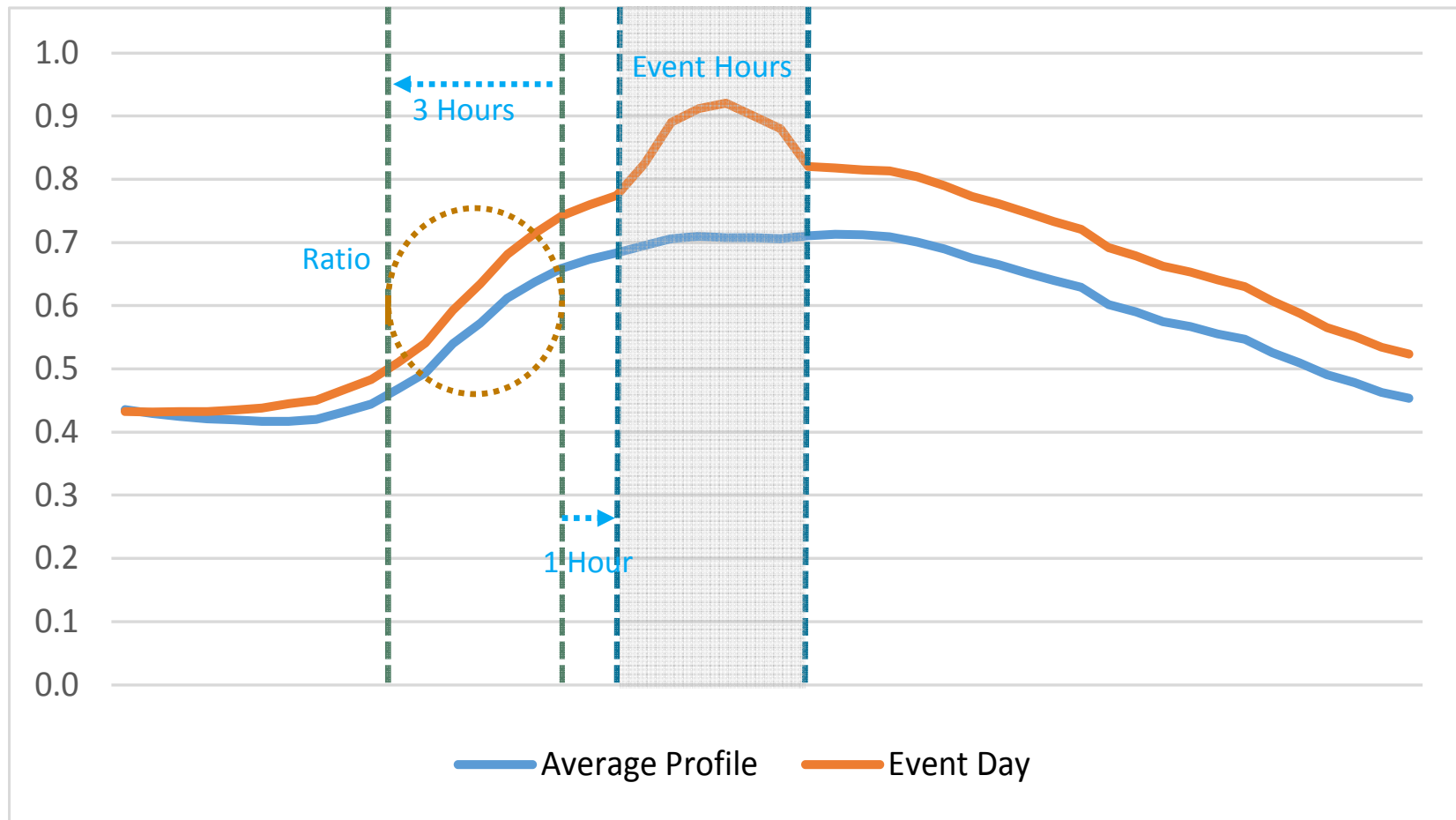


Figure Courtesy of Olivine, Inc..



# Apply Day-of Adjustment to Create Baseline

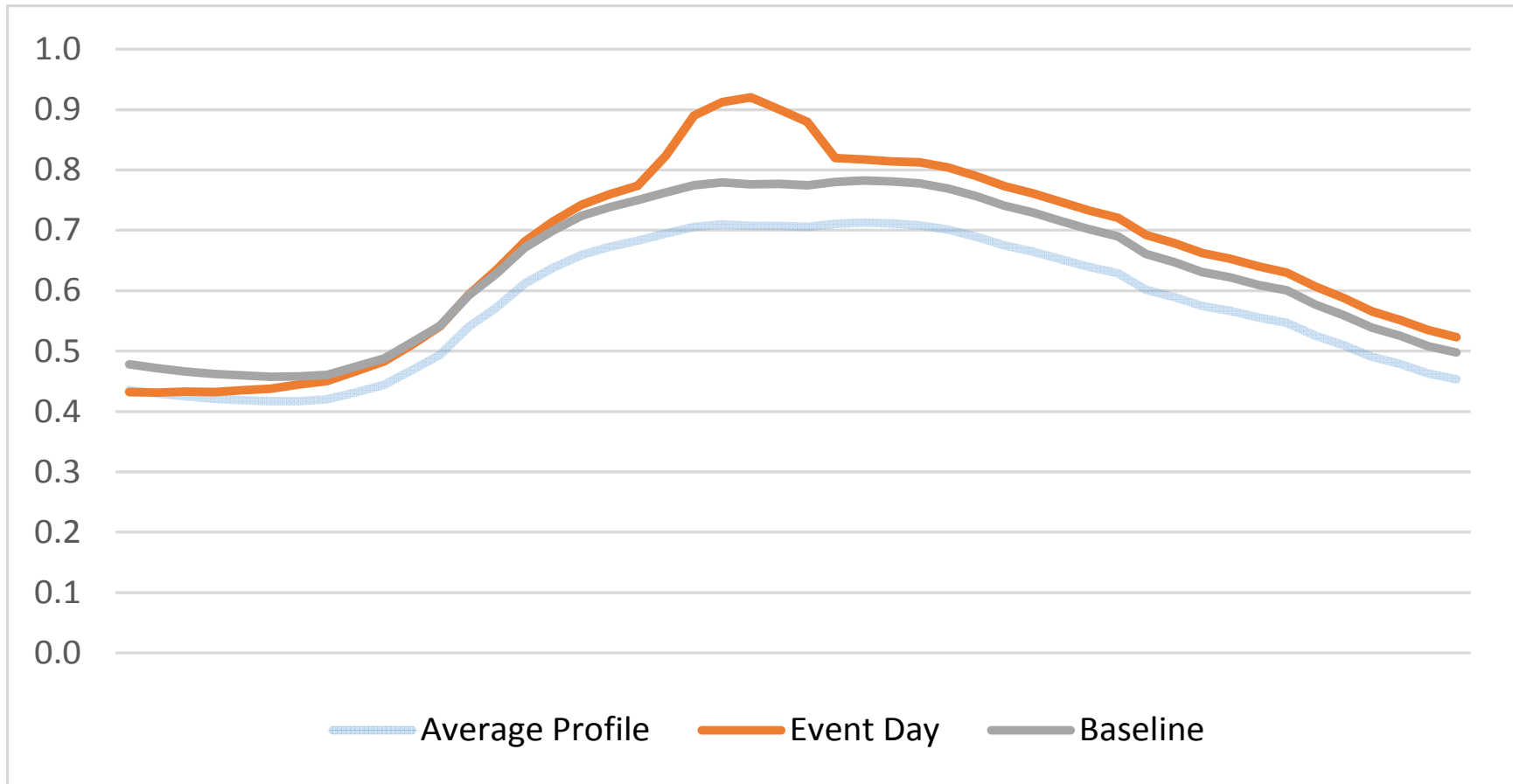


Figure Courtesy of Olivine, Inc..





# Calculate Performance

**Performance = event period load minus baseline**

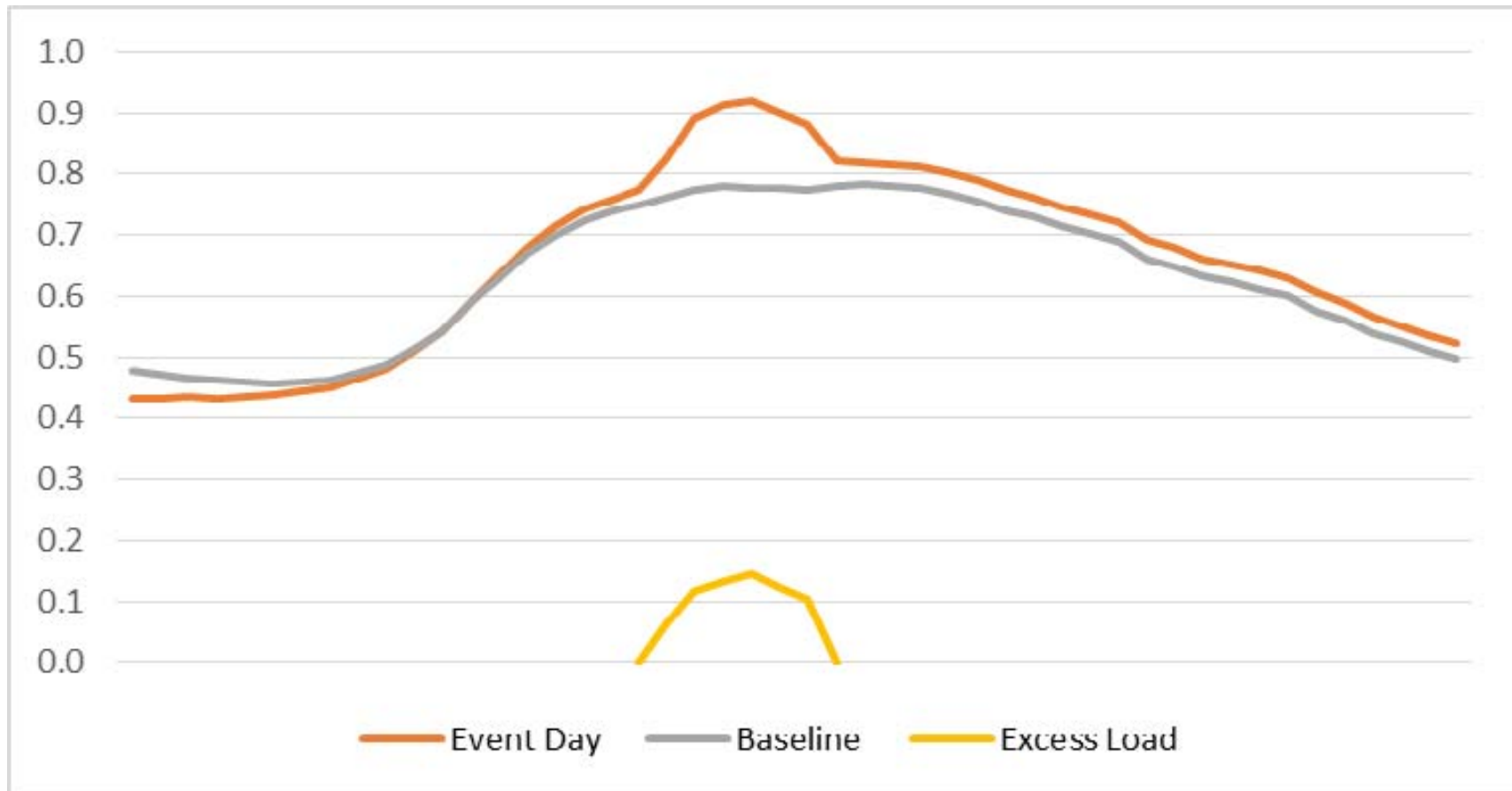


Figure Courtesy of Olivine, Inc..