



Joint Office of
**Energy and
Transportation**

Overview of the Joint Office

June 9, 2022

Steve Lommele, Interim Team Lead for Stakeholder Engagement

driveelectric.gov

Joint Office of Energy and Transportation

Established in the Bipartisan Infrastructure Law to address areas of joint interest to the Departments of Energy and Transportation

\$300M

in FY22 funds to DOT
with transfer authority to DOE

9

major areas of emphasis

Joint Office of Energy and Transportation

Areas of emphasis summary

- 1) technical assistance of vehicle charging
- 2) data sharing
- 3) performance of a national and regionalized study vehicle charging
- 4) training and certification programs
- 5) a program to promote renewable energy generation, storage, and grid integration
- 6) transmission pilots in the rights-of-way
- 7) research, strategies, and actions to mitigate the effects of climate change
- 8) development of a streamlined utility accommodations policy for transmission in the transportation right-of-way
- 9) any other issues that the Secretary of Transportation and the Secretary of Energy identify as issues of joint interest

Joint Office Mission and Vision



Mission

To accelerate an electrified transportation system that is affordable, convenient, equitable, reliable, and safe.

Vision

A future where everyone can ride and drive electric.

Immediate-Term Bipartisan Infrastructure Law

Priorities for the Joint Office

The Joint Office will provide unifying guidance, technical assistance, and analysis to support the following programs:



National Electric Vehicle Infrastructure Formula Program (U.S. DOT)

\$5 billion for states to build a national EV charging network along corridors



National Electric Vehicle Infrastructure Discretionary Program (U.S. DOT)

\$2.5 billion in community grants for EV charging, as well as hydrogen, natural gas, and propane fueling infrastructure



Low-No Emissions Grants Program for Transit (U.S. DOT)

\$5.6 billion in support of low- and no-emission transit bus deployments



Clean School Bus Program (U.S. EPA)

\$5 billion in support of electric school bus deployments

NEVI Formula Program Guidance

Publication kicks off the
state planning process:

- Funding Features
- State EV Infrastructure Deployment Plans
- Project Eligibility Provisions
- Program Administration
- Technical Assistance and Tools

National Electric Vehicle Infrastructure Formula Program

Bipartisan Infrastructure Law



Program Guidance

Federal Highway Administration
February 10, 2022

NEVI Formula Program Guidance – EV Charging

Provides guidance on EV charging infrastructure attributes:

- EV charging infrastructure is installed **every 50 miles** along the State's portions of the Interstate Highway System **within 1 travel mile of the Interstate**, unless a discretionary exception has been granted;
- EV charging infrastructure includes **at least four 150kW DC Fast Chargers with Combined Charging System (CCS) ports** capable of simultaneously charging four EVs;
- EV charging infrastructure has minimum station power capability **at or above 600kW and supports at least 150kW per port simultaneously across four ports for charging**;
- Such additional considerations deemed necessary and appropriate by the Secretary of Transportation.

NEVI Formula Program – Project Funds Eligibility

- The **acquisition or installation of electric vehicle charging infrastructure**;
- **Operating assistance** for costs allocable to operating and maintaining electric vehicle charging infrastructure acquired or installed under this program, for a period not to exceed five years;
- **Development phase activities** relating to the acquisition of stations and equipment as well as installation of EV charging infrastructure
 - This includes community outreach and participation, including with rural, Tribal, and disadvantaged communities, to facilitate equitable and accessible deployment of EV charging infrastructure

Details Available:
Section IV.A- Project Eligibility Provisions

NEVI Formula Program – Project Funds Eligibility

- **On premises signs** to provide information about electric vehicle charging infrastructure acquired, installed, or operated.
- **Data sharing** about EV charging infrastructure to ensure the long-term success of investments
- The acquisition or installation of **traffic control devices** located in the right-of way to provide directional information to electric vehicle charging infrastructure acquired, installed, or operated under the NEVI program
- **Mapping and analysis activities** to evaluate, in an area in the United States designated by the eligible entity

Details Available:
Section IV.A- Project Eligibility Provisions

NEVI Formula Program – Important 2022 Dates

Feb 10:

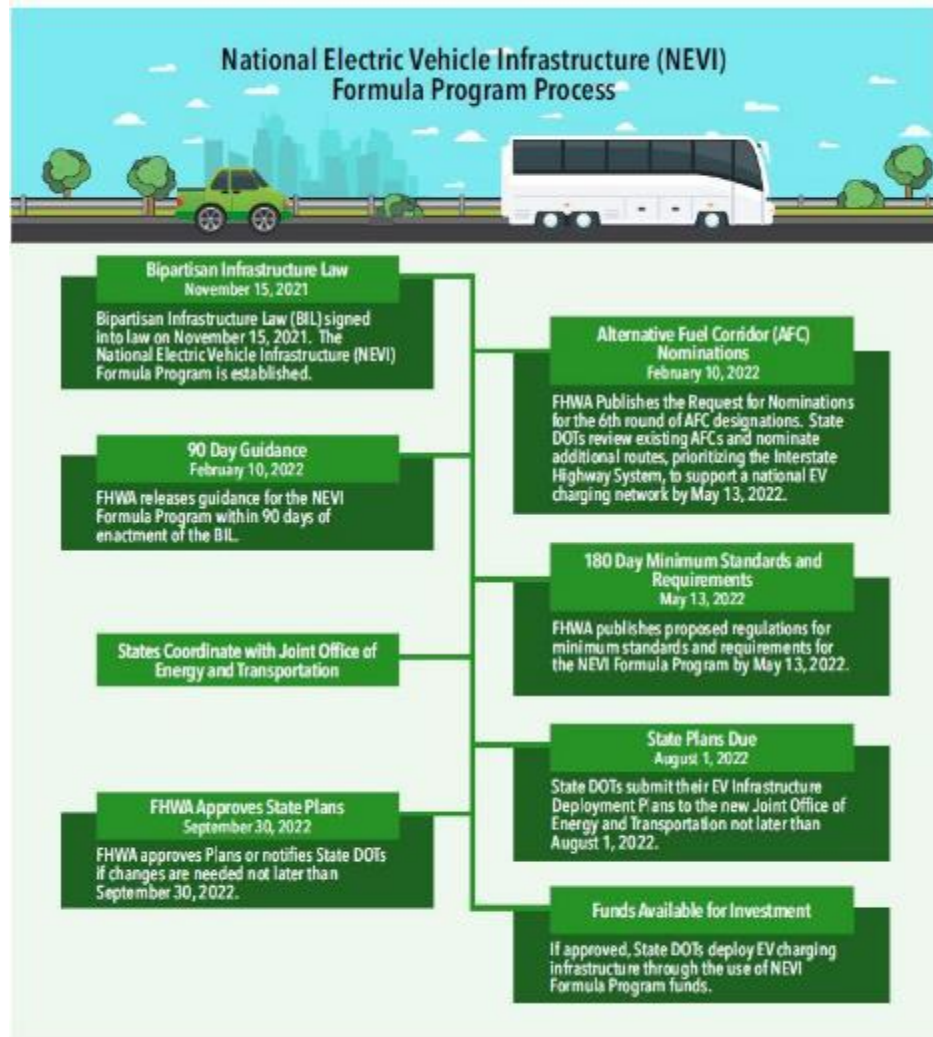
- NEVI Formula Program Guidance
- Alt Fuel Corridor Round 6 Request For Nominations

May/June:

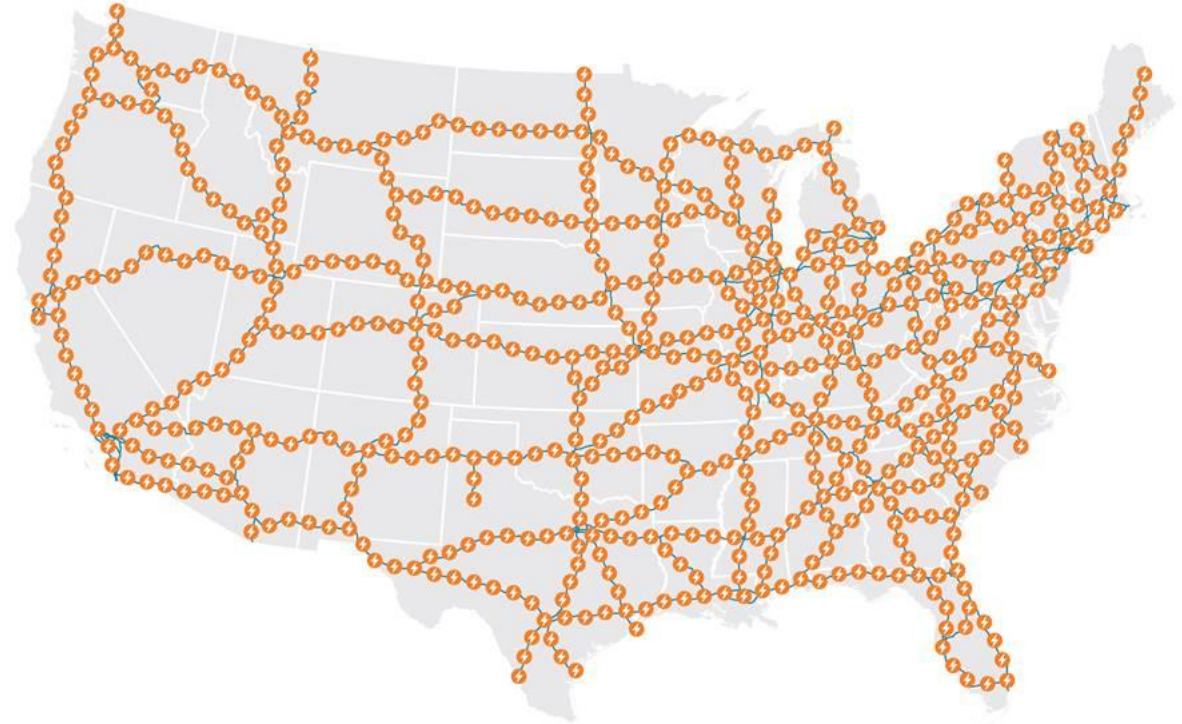
- 180 Day Minimum Standards published
- Round 6 Nominations Due

Aug 1: State Plans Due

Sept 30: FHWA approves State Plans



The goal
is a
national
network



How do we connect regions? The Nation?
How do we ensure that network is convenient, affordable,
reliable, equitable, and safe?

Joint Office Technical Assistance Principles

Respectful
collaboration with the
electric charging
experts that have
preceded the Joint
Office to accomplish
our shared vision:
*A future where everyone can
ride and drive electric*

- In our goal to build a reliable, convenient, equitable national network, Technical Assistance will
 - Dive into the hard challenges alongside states and our partners in order to create something revolutionary.
 - Help states getting started build on the successes and learn from the challenges of states with more mature networks.
 - Utilize the people, programs, and relationships that came before us and enable future charging experts.



State One on One Meetings

Individual meetings between states and the Joint Office

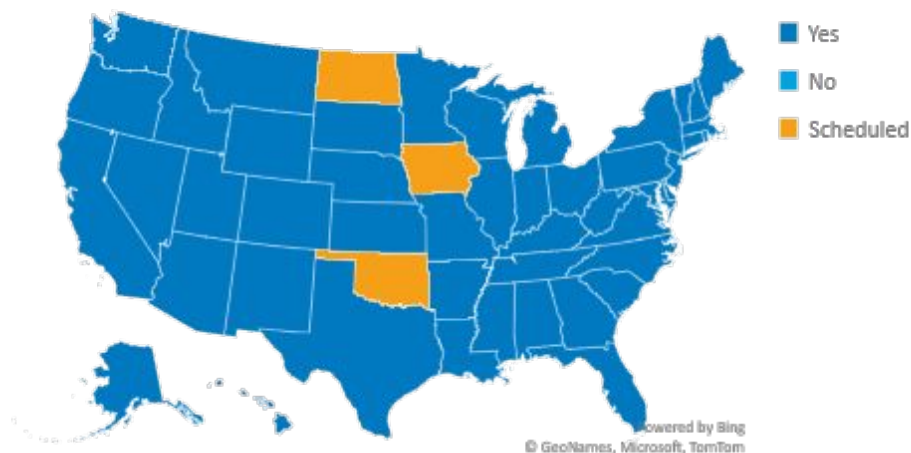
50 Meetings held &
3 states remaining: IA,
ND, OK,

(as of June 1)

- Addressing questions/concerns related to NEVI Formula Program & Round 6 AFC nominations
- General assistance developing NEVI State Plans
- Support with Round 6 AFC nominations
- Clarification on NEVI Program Guidance or 180-day Minimum Standards & Requirements

Email or use contact form for assistance

State one on one meetings



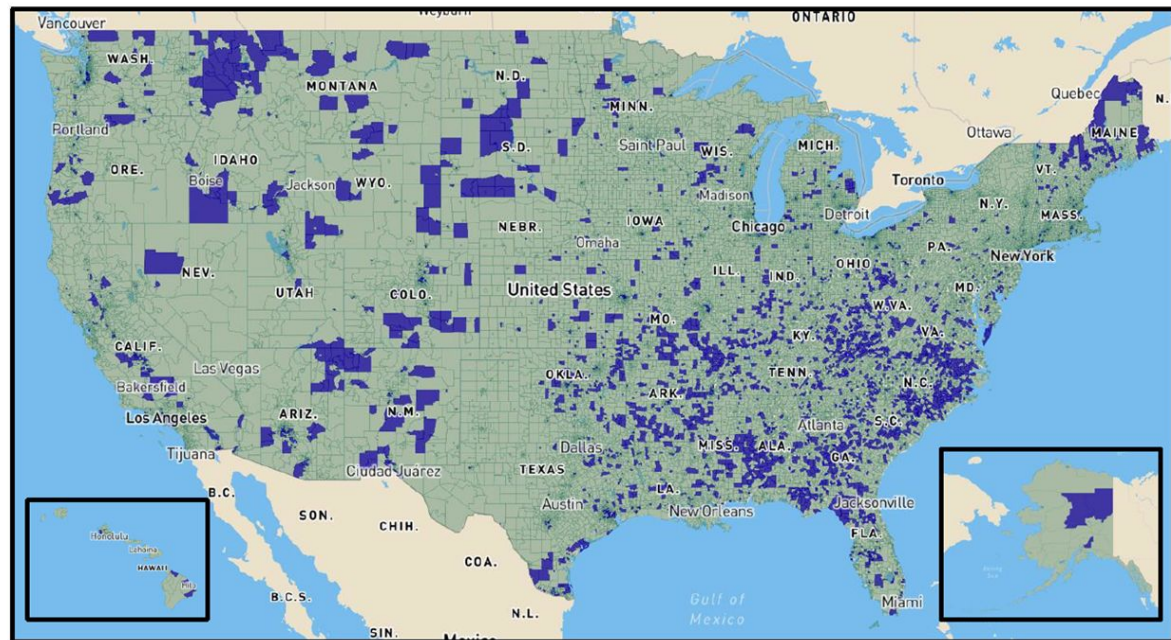
Equity and Justice40

Important Guidance Currently Available:

- Justice40 Interim Guidance
- Guidance to states

Important Forthcoming Information:

- Minimum Standards and FAQs
- Equity and Justice40 webinar



Equity Tools for NEVI:

- Electric Vehicle Charging Justice40 Map

<https://www.anl.gov/es/electric-vehicle-charging-equity-considerations>

- Rural EV Toolkit

<https://www.transportation.gov/rural/ev/toolkit>

DriveElectric.gov

Website connects state DOTs and other stakeholders to technical assistance resources, including:

- NEVI guidance
- State plan template
- Technical assistance concierge
- Supporting data and tools
- Will continue to update as new resources become available

The screenshot shows the homepage of DriveElectric.gov. At the top, there is a navigation bar with the logo for the Joint Office of Energy and Transportation, which includes a stylized lightning bolt icon. The navigation links are: About, Technical Assistance, Data & Tools, News & Events, Careers, and Contact. Below the navigation bar is a large hero image of an electric vehicle charging station. Overlaid on the right side of the hero image is a blue box with the text: "Joint Office vision: A future where everyone can ride and drive electric" and a "Learn more" button. Below the hero image is a dark blue banner with the following text: "A modernized and interagency approach to support the deployment of zero-emission, convenient, accessible, equitable transportation infrastructure". To the right of this banner is a paragraph of text: "The Joint Office of Energy and Transportation was created through the Bipartisan Infrastructure Law (BIL) to facilitate collaboration between the U.S. Department of Energy and the U.S. Department of Transportation. The Joint Office will align resources and expertise across the two departments toward leveraged outcomes. The office will be a critical component in the implementation of the BIL, providing support and expertise to a multitude of programs that seek to deploy a network of electric vehicle chargers, zero-emission fueling infrastructure, and zero-emission transit and school buses. The scope of the Joint Office will continue to evolve as directed by both departments." Below this paragraph are two buttons: "Contact us" and "Technical assistance". At the bottom of the page is a dark blue section titled "Benefits of investing in our electric vehicle charging infrastructure". Below this title is a paragraph: "Initial priorities of the Joint Office will be to support states with planning and to implement the National Electric Vehicle Charging Infrastructure program." Below this paragraph are four circular icons, each with a corresponding title and description: 1. "Support electric vehicles" (lightning bolt icon) - "Accelerates the adoption of electric vehicles, including for those who cannot reliably charge at home to enable up to 50% of new vehicle sales to be electric by 2030." 2. "Fewer emissions" (cloud with lightning bolt icon) - "Reduces transportation-related emissions and helps put the United States on a path to net-zero emissions by no later than 2050." 3. "Job creation" (wrench and screwdriver icon) - "Positions U.S. industries to lead global transportation electrification efforts and create good jobs." 4. "A network for everyone" (network of nodes icon) - "Targeted equity benefits for disadvantaged communities, reducing mobility and energy burdens while also creating jobs and supporting businesses."

energy.gov | transportation.gov

Joint Office of Energy and Transportation

About Technical Assistance Data & Tools News & Events Careers Contact

Joint Office vision:
A future where everyone can ride and drive electric

Learn more

U.S. Department of Energy U.S. Department of Transportation FuelEconomy.gov Alternative Fuels Data Center

A modernized and interagency approach to support the deployment of zero-emission, convenient, accessible, equitable transportation infrastructure

The Joint Office of Energy and Transportation was created through the Bipartisan Infrastructure Law (BIL) to facilitate collaboration between the U.S. Department of Energy and the U.S. Department of Transportation. The Joint Office will align resources and expertise across the two departments toward leveraged outcomes. The office will be a critical component in the implementation of the BIL, providing support and expertise to a multitude of programs that seek to deploy a network of electric vehicle chargers, zero-emission fueling infrastructure, and zero-emission transit and school buses. The scope of the Joint Office will continue to evolve as directed by both departments.

Contact us Technical assistance

Benefits of investing in our electric vehicle charging infrastructure

Initial priorities of the Joint Office will be to support states with planning and to implement the National Electric Vehicle Charging Infrastructure program.

Support electric vehicles
Accelerates the adoption of electric vehicles, including for those who cannot reliably charge at home to enable up to 50% of new vehicle sales to be electric by 2030.

Fewer emissions
Reduces transportation-related emissions and helps put the United States on a path to net-zero emissions by no later than 2050.

Job creation
Positions U.S. industries to lead global transportation electrification efforts and create good jobs.

A network for everyone
Targeted equity benefits for disadvantaged communities, reducing mobility and energy burdens while also creating jobs and supporting businesses.



Joint Office of
**Energy and
Transportation**

Thank You

driveelectric.gov