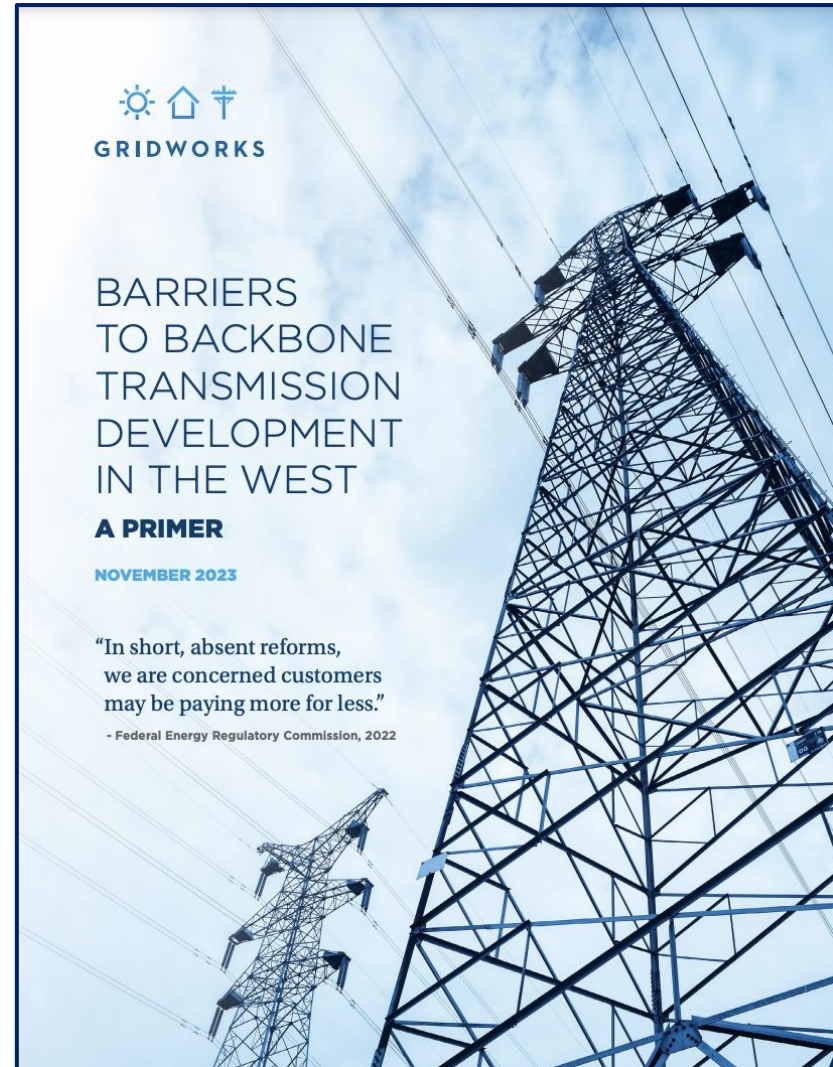




Barriers to Backbone Transmission Development in the West

February 8, 2024 | 10-11am PT
Webinar

Gridworks is a non-profit
that convenes, educates, and
empowers stakeholders
working to decarbonize our
economy.



INTRODUCTIONS



Rich Glick
Senior Fellow



Rebecca Wagner
Board Member



Cathy Boies
Director, Interior West

Questions to listen for:

- What is backbone transmission?
- What is FERC Order 1000? How is it working in the West?
- Name three barriers to transmission development in the West

Backbone Transmission

U.S. Power Grid



Regional Entities

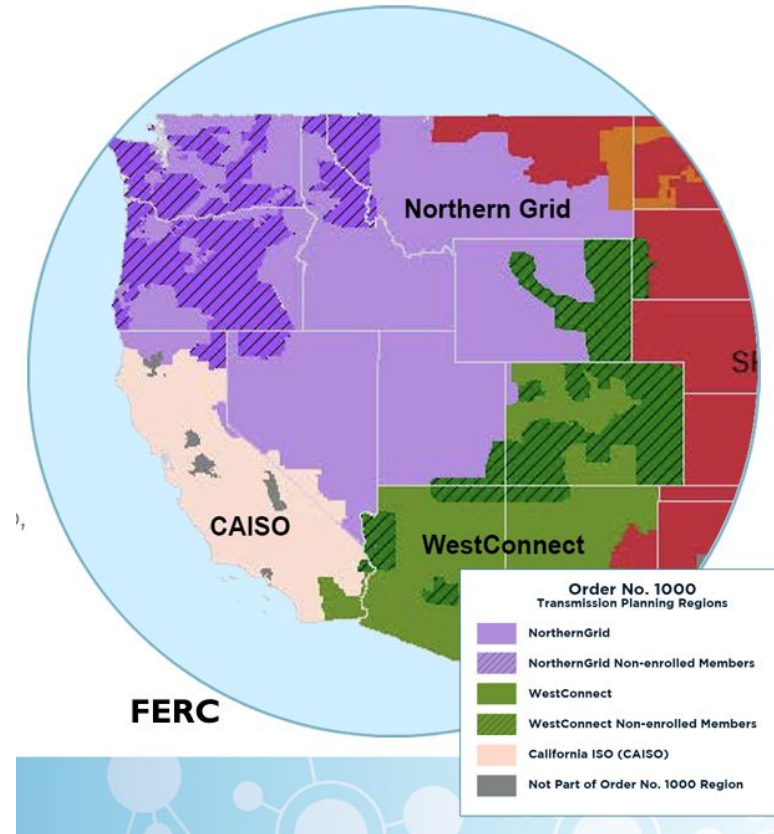


Sources: <https://www.epa.gov/green-power-markets/us-electricity-grid-markets>;
<https://www.epa.gov/green-power-markets/us-grid-regions>

FERC Order 1000

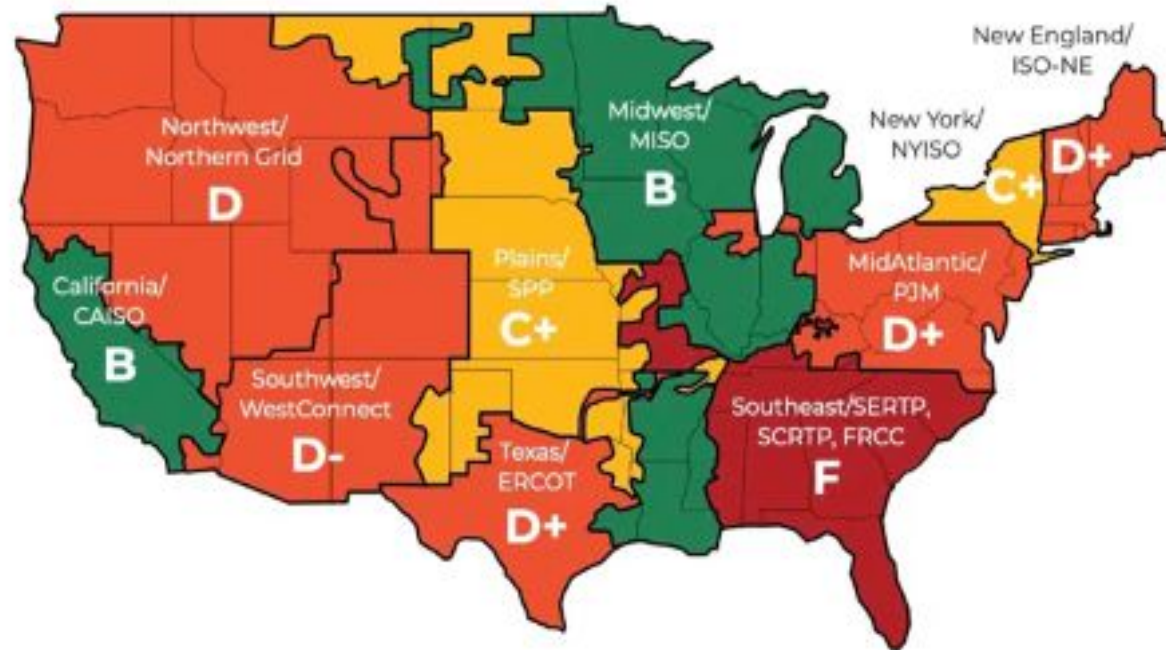
FERC's current rules for backbone **transmission planning** and **cost allocation**

Western Planning Regions



Source: <https://www.ferc.gov/media/regions-map-printable-version-order-no-1000>

HOW IS FERC ORDER 1000 WORKING?



Americans for a Clean Energy Grid Report Card June 2023

Source: <https://cleanenergygrid.org/aceg-releases-transmission-planning-development-report-card/>

SHORTCOMINGS IN REGIONAL PLANNING

- Focus on single, not multi-benefit projects
- Bottoms up planning approach
- Planning window - short term and static
- Data limitations
- Inconsistent consideration of grid emerging technologies

“We preliminarily find that the **failure of existing regional transmission planning** and cost allocation processes to perform this type of transmission planning and cost allocation is resulting in **unjust, unreasonable, unduly discriminatory, and preferential** Commission-jurisdictional rates.”
- FERC, 2022

Source: FERC, [Notice of Proposed Rulemaking Addressing Planning, Cost Allocation](#), April 2022, p. 29.

PROJECT COST ALLOCATION IS UNCLEAR

Legal standard: costs must be “roughly commensurate” with benefits

- Regional benefits are hard to capture
- Few utilities can finance a backbone project on their own
- Public power utility participation is optional
- Local transmission solutions become the default



SITING DIFFICULTIES



WESTERN INTERCONNECTION BY THE NUMBERS

4	Reliability Coordinators
34	Balancing Authorities
47	Transmission Operators
298	Generator Owners
407	Registered Entities
87%	Public or protected land
22,581	Wildfires in 2022
156,000	Miles of transmission
167,530	MW Peak Demand
1,800,000	Square miles
87,000,000+	People

- Diverse state energy policies
- Large portion of public lands
- Maze of permitting and siting venues

Source: <https://www.wecc.org/Administrative/State%20of%20the%20Interconnection.pdf>

COMPREHENSION CHECK

- **What is backbone transmission?**
 - High voltage, long-distance electric lines that serve multi-state or inter-regional needs and support regional reliability
- **What is FERC Order 1000? How is it working in the West?**
 - FERC's regional planning and cost allocation rules. No backbone projects in the Pacific Northwest or Southwest since Order 1000 issued.
- **Name three barriers to transmission development in the West.**
 - regional planning - piecemeal, check the box exercises
 - cost allocation - unclear responsibility and optional public power participation
 - siting difficulties - a fragmented interconnection with many permitting venues



INTERESTED IN LEARNING MORE?

CATHY BOIES

cboies@gridworks.org

www.gridworks.org



GRIDWORKS