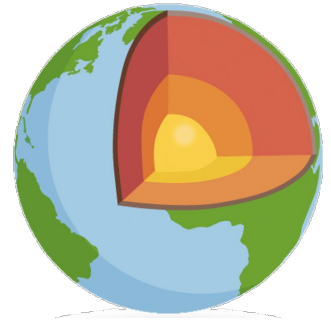


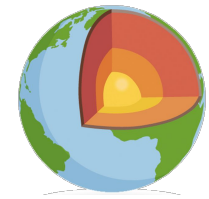
Recommended Geothermal Sites



NM Geothermal Working Group

Represented by Tom Solomon,
Shari Kelley, Jean-Lucien
Fonquerne, Rebecca Puck Stair

April 14, 2026



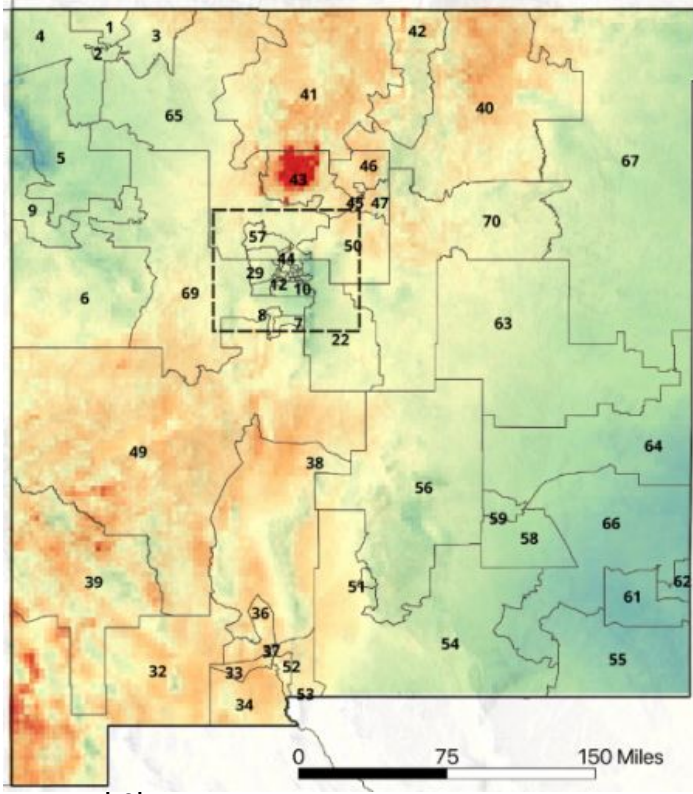
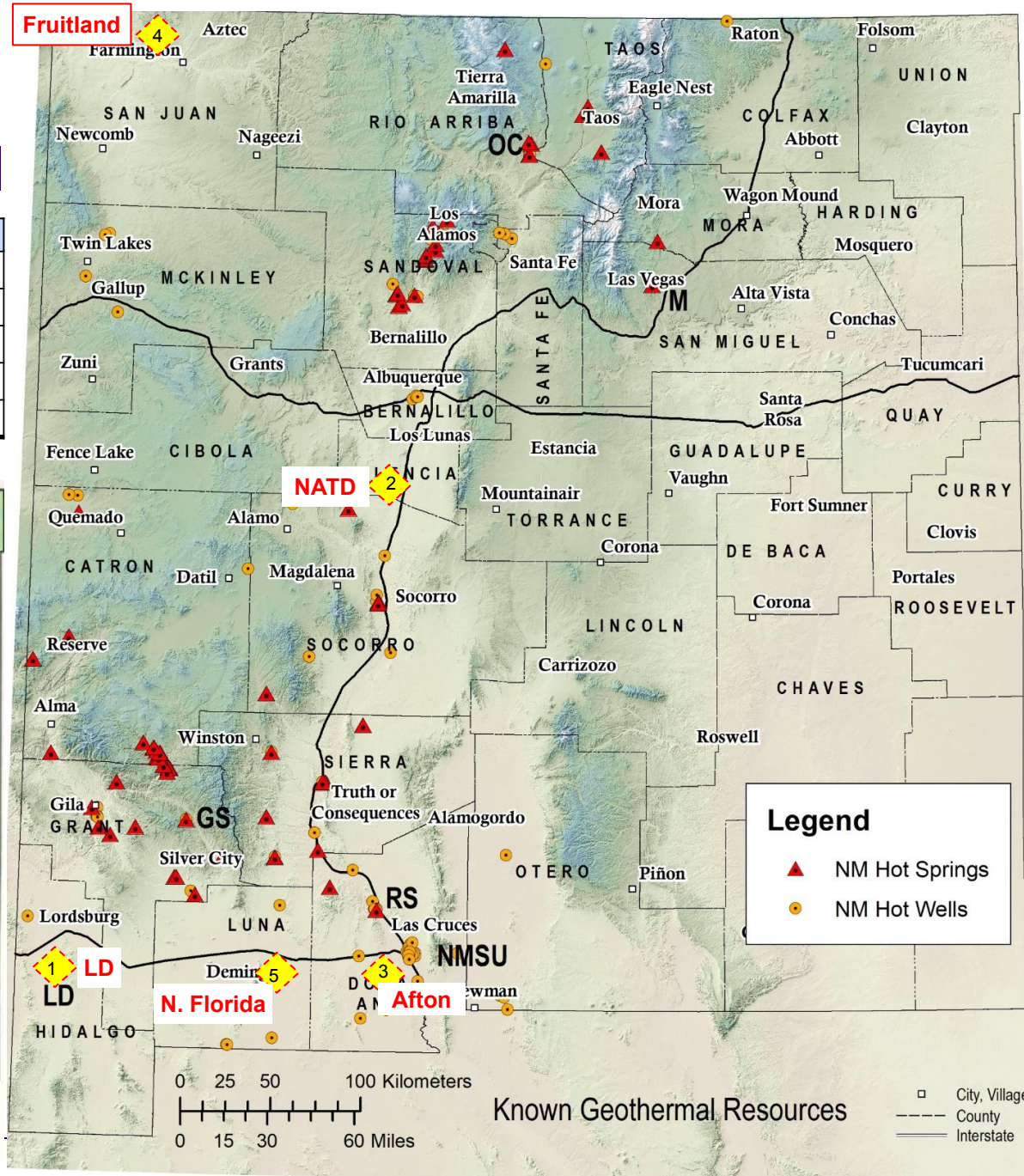
Summary

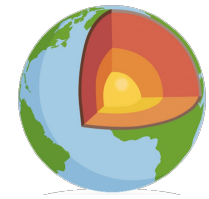
- This material is provided per a request from PNM and Gridworks, to be used in modeling potential sites for geothermal power plants in the 2026 IRP.
- There are two sections listing five sites each:
 1. Recommended geothermal sites in PNM's transmission/service territory
 2. Other 'non-PNM' recommended geothermal sites outside PNM's transmission/service territory, or that may be limited by available transmission capacity
- Each section includes a state map with markers, followed by a table with details including approximate site coordinates (to plug into google maps).



1) PNM Geothermal Sites to Model

	Name	County
1	Expand Lightning Dock, LD	Hidalgo
2	NATD holdings, N. of Bernardo	Valencia
3	Afton	Dona Ana
4	Fruitland	San Juan
5	N. Florida Mountains	Luna





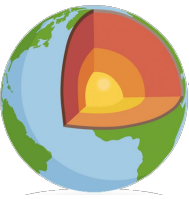
PNM Sites to Model for EGS or HGS*

- **Recommendations to PNM from Dr. Shari Kelley (NMBG), Jean-Lucien Fonquergne (PRRC), Tom Solomon and ECAM, on behalf of the NM Geothermal Working Group, 4/10/2026. All EGS, except LD is HGS.**
- *Use for IRP modeling of likely locations to site utility scale geothermal power plants.*
- *Coordinates provide approximate, **not exact**, locations.*

#	Name	County	~Coordinates	Commentary
1	Expand Lightning Dock	Hidalgo	32.14339, -108.83825	Existing 15MWe HGS ; has more capacity
2	NATD holdings, N. of Bernardo	Valencia	34.59918, -106.83562	Twinning estate, high shallow heat, bottom hole temps, near xmission
3	Afton	Dona Ana	32.10858, -106.85233	nr Afton plant; youthful volcanos; nearby oil wells w bottom temps > 300F
4	Fruitland	San Juan	36.78992, -108.30824	127 C bottom temp at 12,448 ft
5	N. Florida Mountains	Luna	32.24560, -107.57603	Reports of hot irrigation water

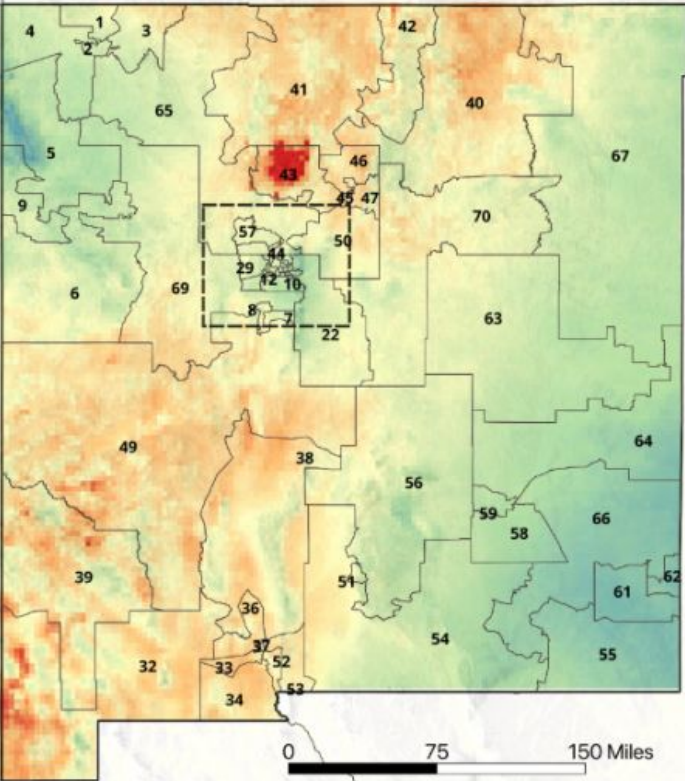
*HGS = classic hydrothermal geothermal system

EGS = enhanced geothermal system

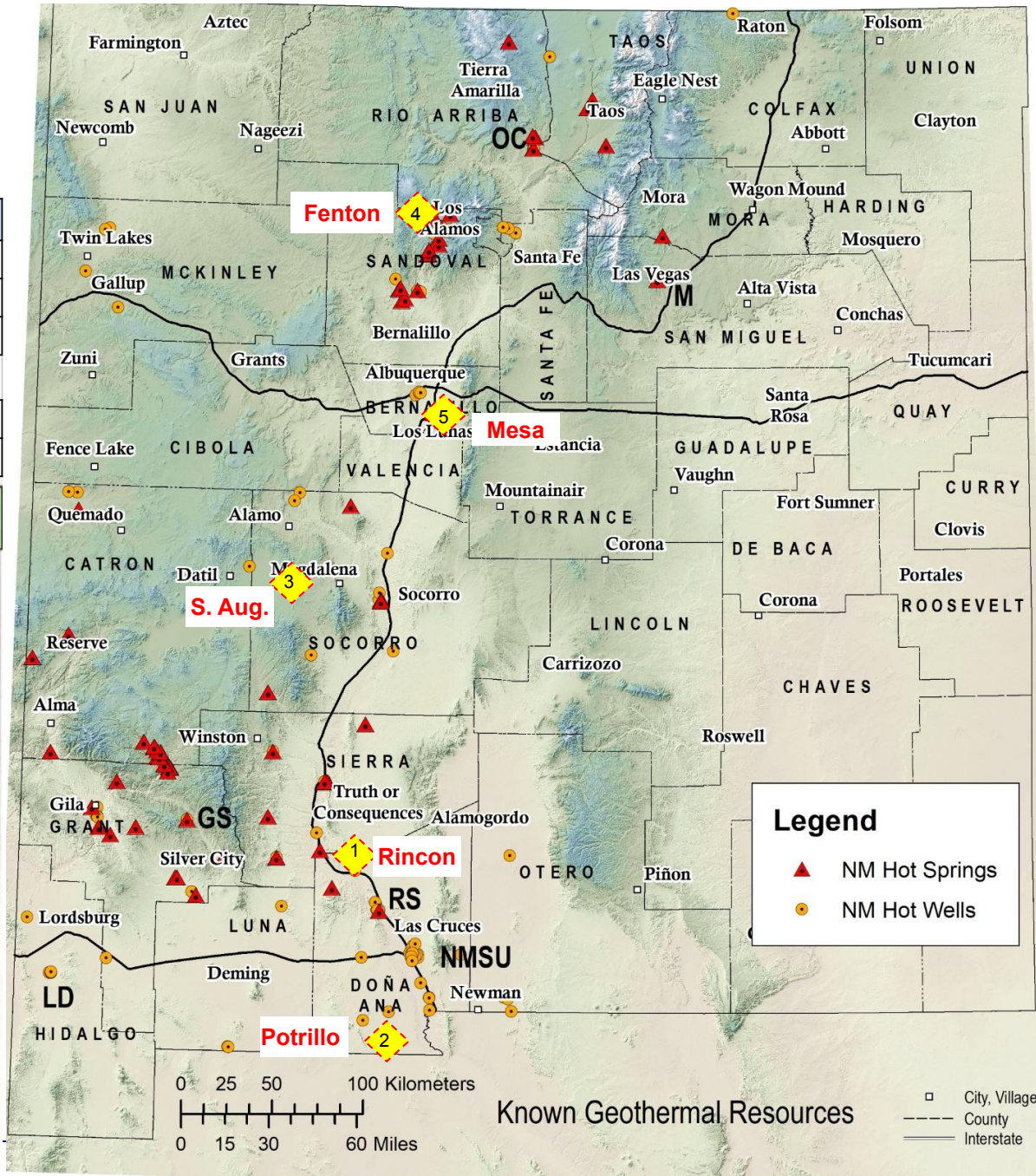


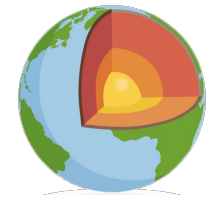
2) 'Non-PNM' Geothermal Sites

	Name	County	Utility
1	Rincon	Dona Ana	EPE
2	Potrillo	Dona Ana	EPE
3	San Augustine Plain	Socorro	Socorro El
Limited by transmission			
4	Fenton Hill geothermal	Sandoval	Jemez Mtn
5	Mesa del Sol	Bernalillo	PNM



link

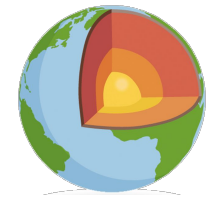




'Non-PNM' Geothermal Sites

- *Recommendations to PNM from Dr. Shari Kelley (NMBG), Jean-Lucien Fonquergne (PRRC), Tom Solomon and ECAM, on behalf of the NM Geothermal Working Group, 4/10/2026. Mix of EGS and HGS.*
- *Use for IRP modeling of likely locations to site utility scale geothermal power plants.*
- *These sites believed to have a prime heat resource but may be outside PNM territory or are currently transmission limited.*
- *Coordinates provide approximate, **not exact**, locations.*

#	Name	County	Coordinates	Utility	
1	Rincon	Dona Ana	32.69178, -107.06062	EPE	Ormat project: shallow heat, 99C at 375m.
2	Potrillo	Dona Ana	31.81767, -106.98021	EPE	E. Potrillo Mtns S. tip. Explored by Hunt. Interesting airborne magnetics. BLM leases
3	San Augustine Plain	Socorro	34.07641, -107.57117	Socorro EI	Old Sun oil wells w/ temp log 90C at 1500m
	Transmission limited				
4	Fenton Hill geothermal	Sandoval	35.89253, -106.68825	Jemez Mtn	Need new transmission line, from Cuba?
5	Mesa del Sol	Bernalillo	34.95224, -106.62914	PNM	May have congested transmission



Backup

New Mexico Transmission Lines

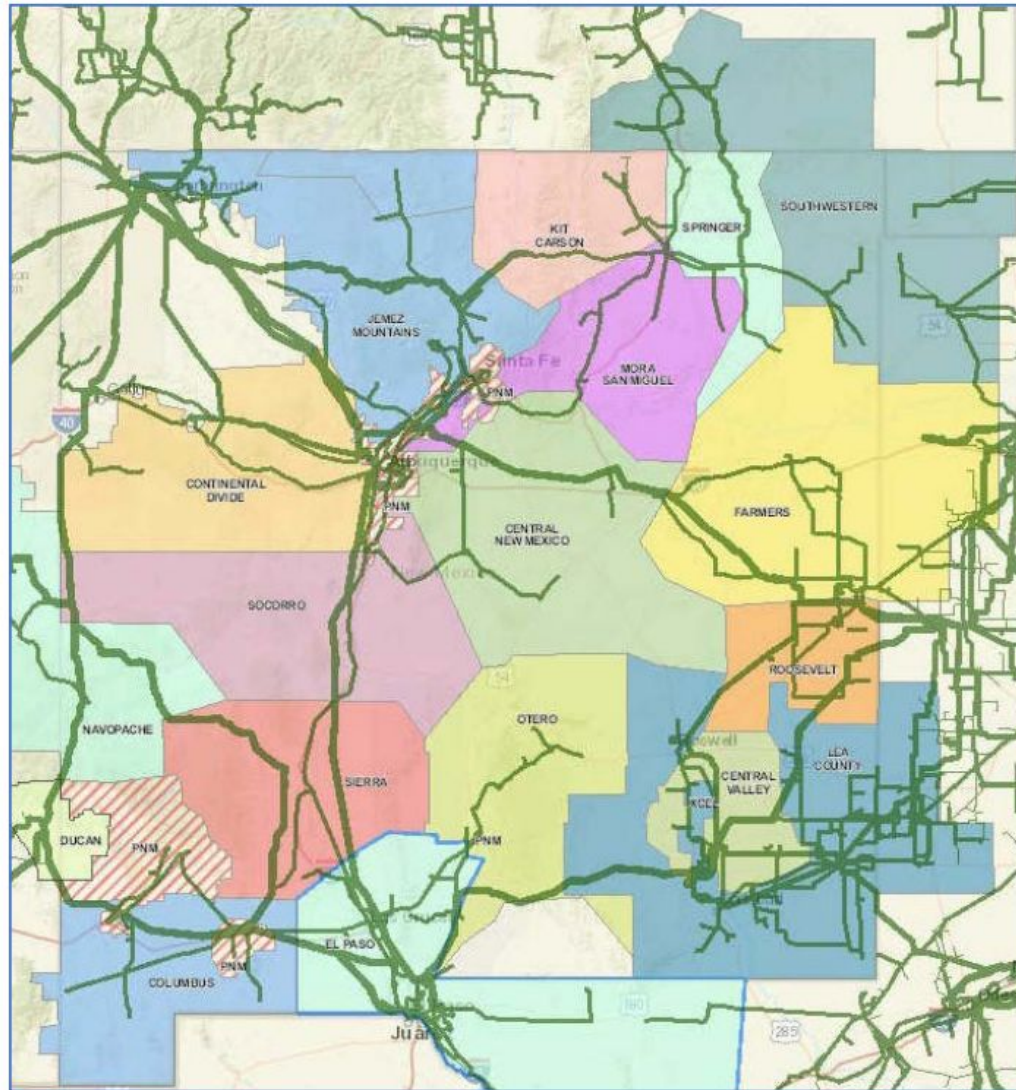
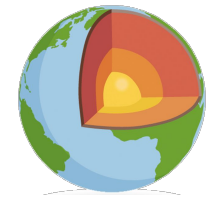


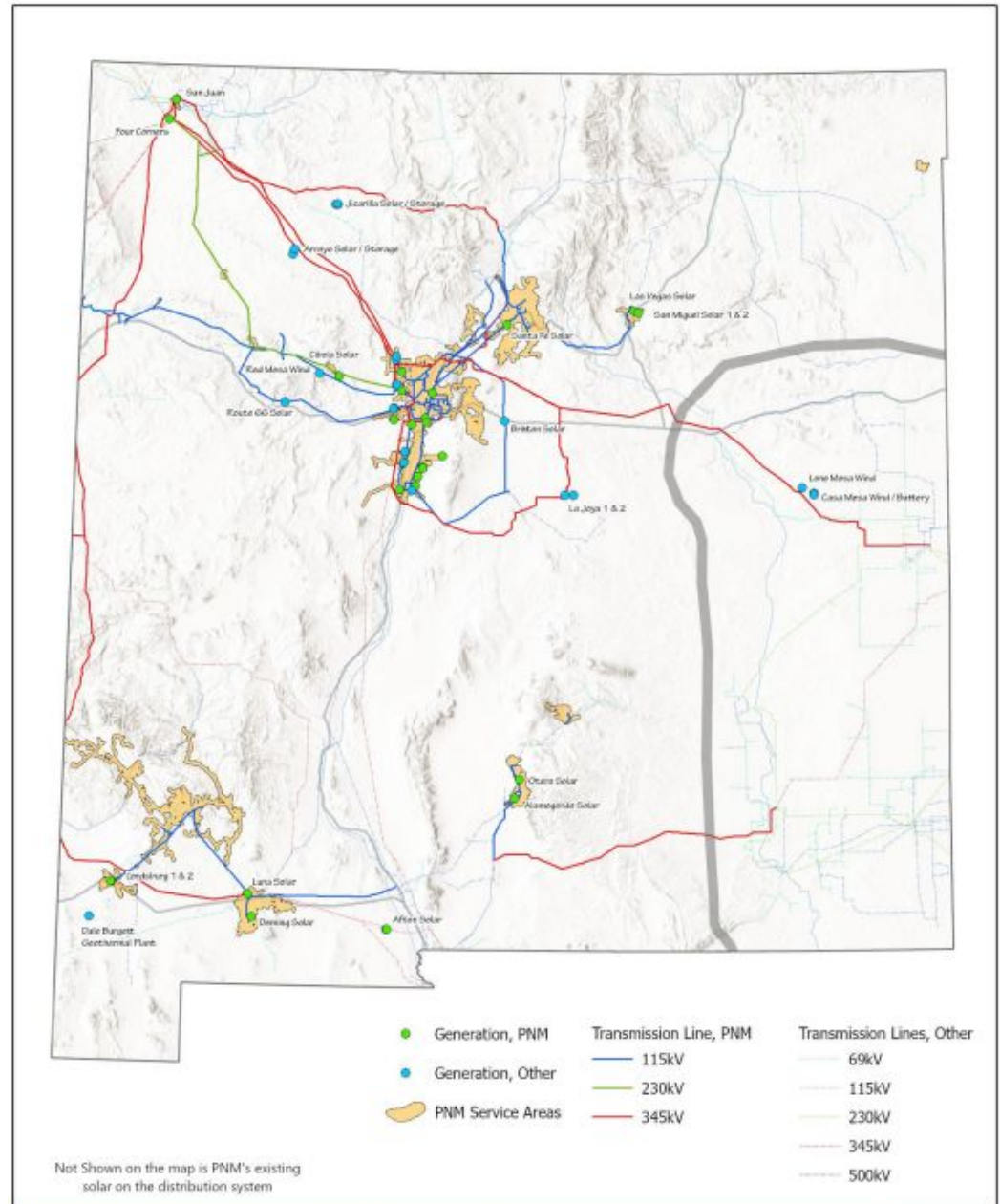
Figure 2. New Mexico Electric Power Supplier Territories and Transmission Lines (Source: NM SBA study, Dec. 2019. Figure used by permission of the study's sponsors.)



PNM Grid

From 2023 IRP

New transmission costs ~ \$1M/mile

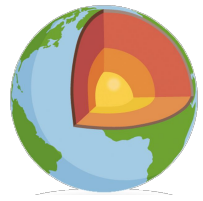


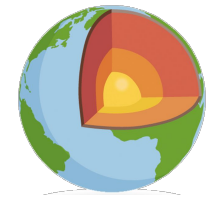
PNM's existing transmission system

Proprietary statement: This document and all services herein are the property of Public Service Company of New Mexico (PNM) and neither PNM nor its subsidiaries, affiliates or contractors, any right to be taken for use of this document, the subject matter herein, or any design or technical information herein. PNM hereby disclaims any copyright or other intellectual property rights in this document, including any design or technical information herein. No part of this document may be reproduced, stored in a retrieval system, or transmitted in any form or by any means, electronic, mechanical, photocopying, recording, or by any information storage and retrieval system, without the prior written permission of PNM. This document is provided under the condition that it will be held in confidence by the recipient, that it is subject to certain open source, and that it will not be used in any way detrimental to PNM.



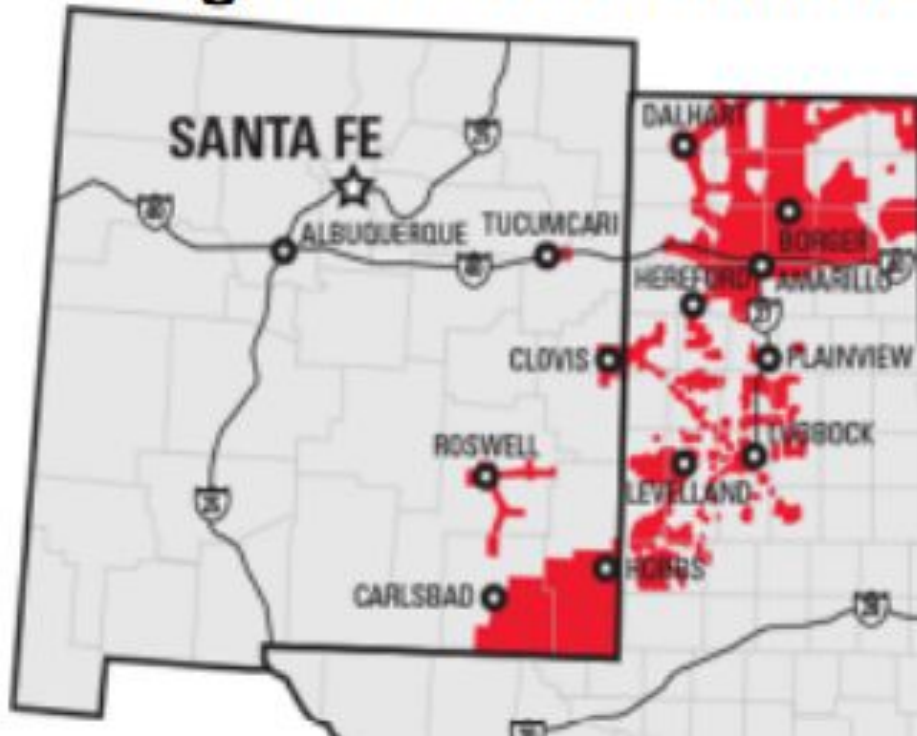
El Paso Electric Territory

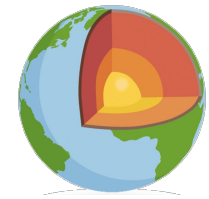




Xcel Energy Territory (was SPS)

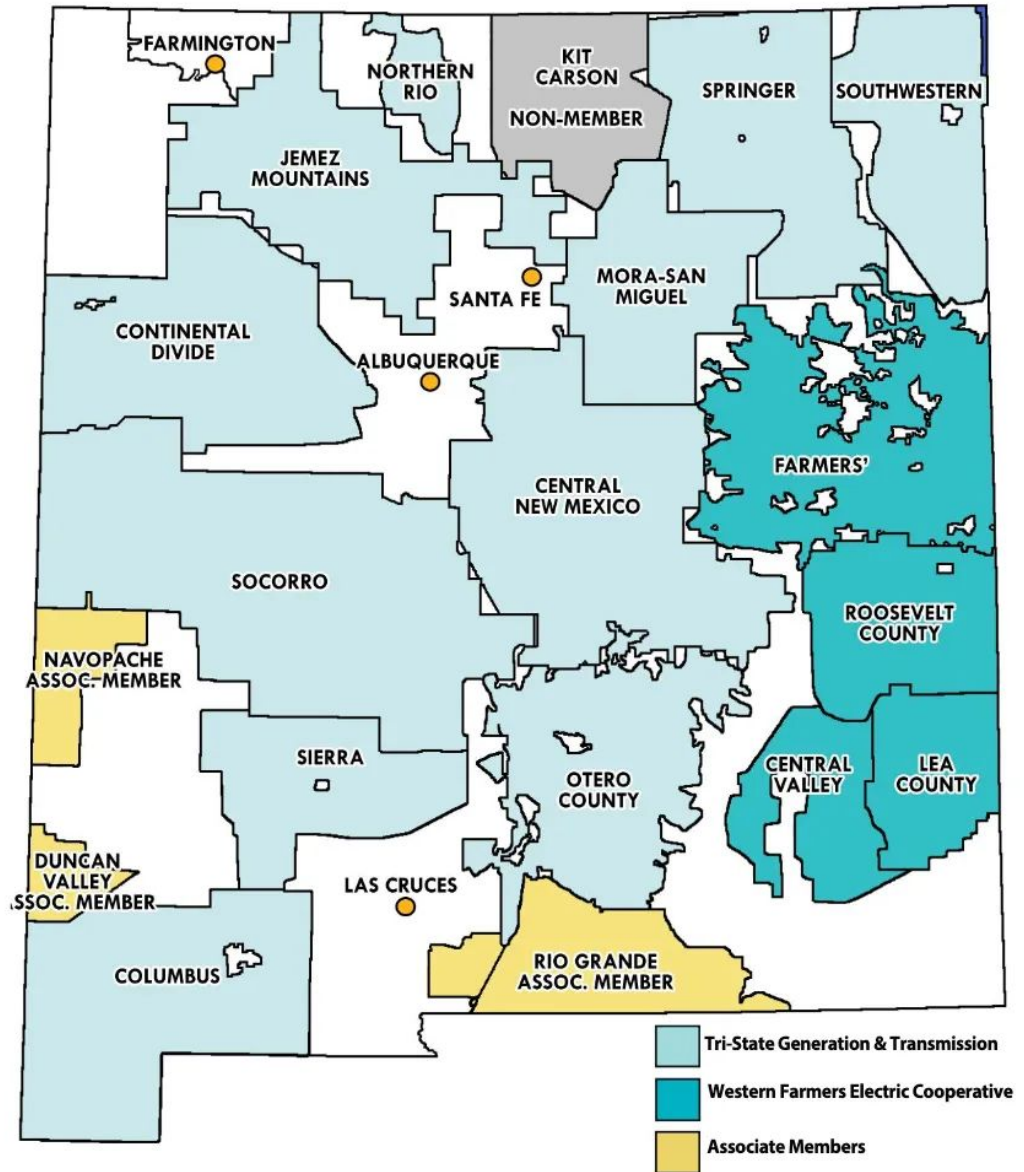
Figure 1 – SPS Electric S

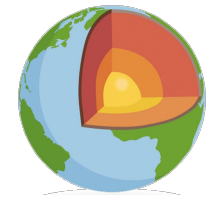




NM Rural Electric Coops

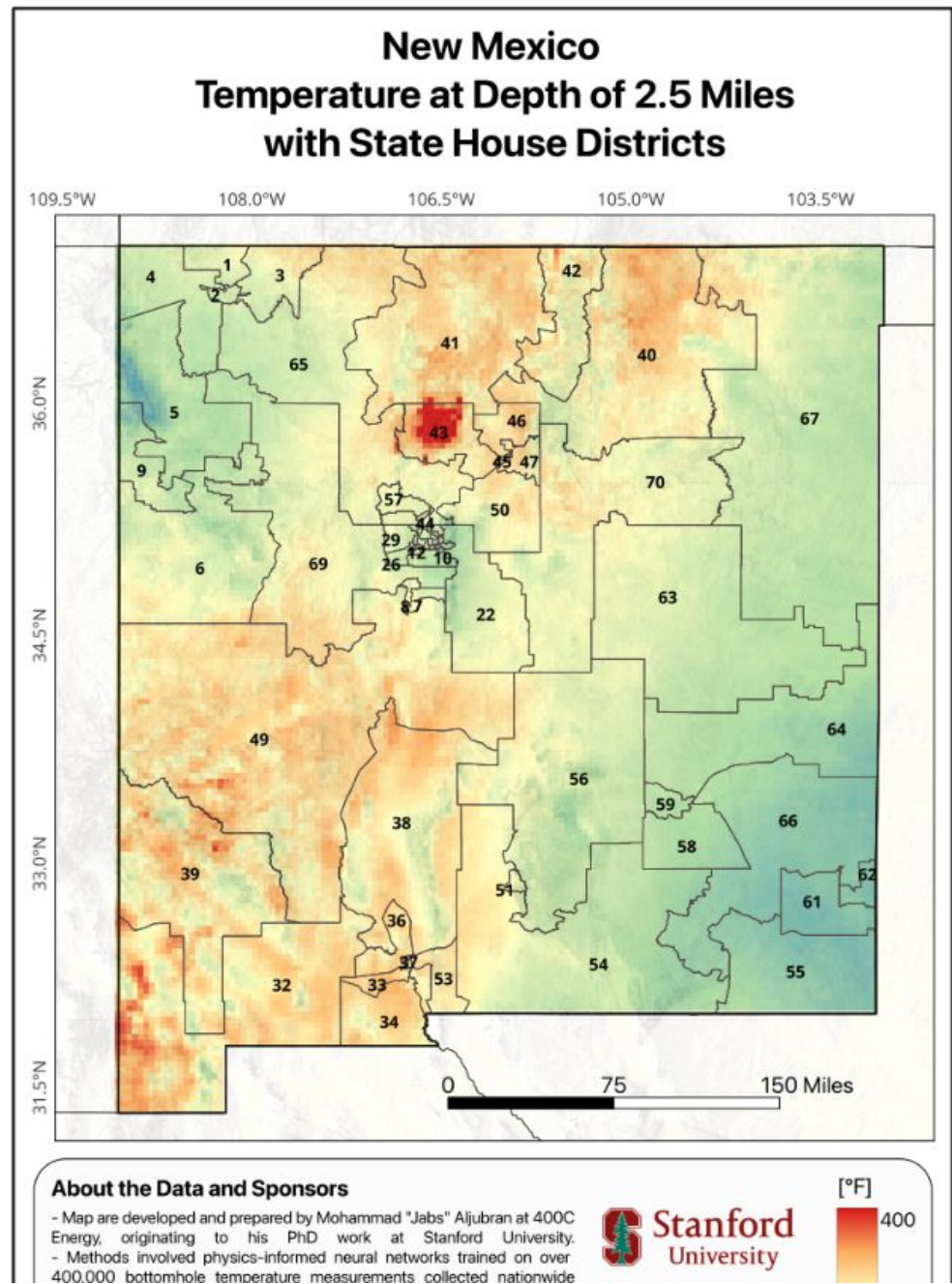
- Central New Mexico Electric
- Central Valley Electric
- Columbus Electric
- Continental Divide Electric
- Farmers' Electric
- Jemez Mountains Electric**
- Lea County Electric
- Mora-San Miguel Electric
- Northern Río Arriba Electric
- Otero County Electric
- Roosevelt County Electric
- Sierra Electric
- Socorro Electric**
- Southwestern Electric
- Springer Electric

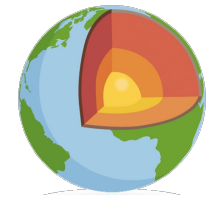




Stanford Geothermal Map

- Temperature at depth of 2.5 miles
 - Considered by NM Bureau of Geology as the best current map of subsurface heat.



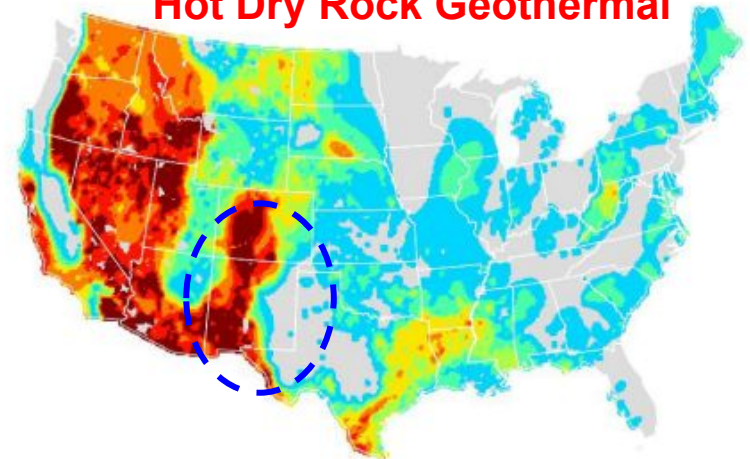


NM is #6 in US Geothermal Potential

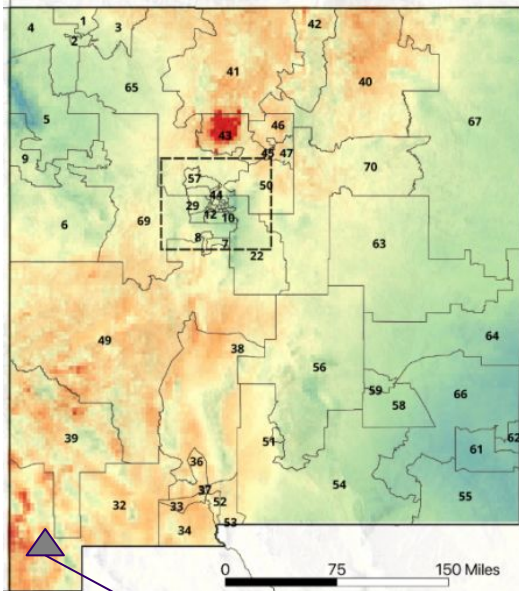
(a) Hydrothermal
340.8 GW in 1,063 sites



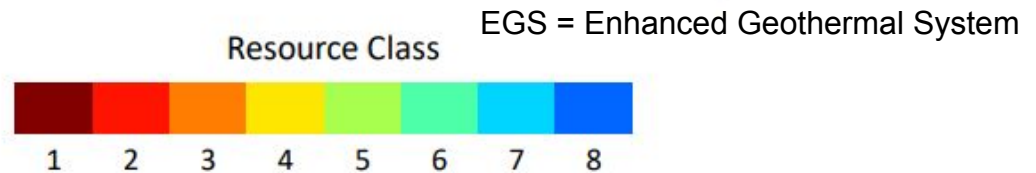
(b) Deep EGS
70.1 TW in 41,034 sites
Hot Dry Rock Geothermal



Geothermal Opportunities in New Mexico



Lightning Dock



Distribution of (a) hydrothermal and (b) deep EGS sites for power generation by resource class TEM dataset.

New Mexico is rated #6 in the US for geothermal energy potential (US EIA). Both hydrothermal & deep EGS- hot/dry rock.